



Atelier

Y 510 Elle Studio

Modular system of wardrobes and walk-in wardrobes designed to be versatile enough to adapt to any space. The Atelier system offers evolved organisation of internal spaces with a range of different accessories. Adaptability is completed with custom measurements.

The structure is in 25mm MDF multi-layer in the wood finishes: Sycamore frisè glossy ivory, matt dark stained Zebrano, matt Canaletto walnut. All profiles are in anodised aluminium in the finishes: Matt platinum, Matt satin bronze, Bright aluminium, Bright gold, Bright Champagne gold, Bright dark brown Electrocolour.

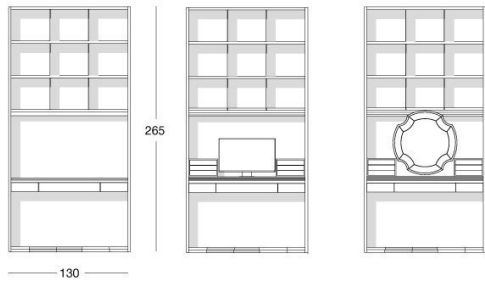
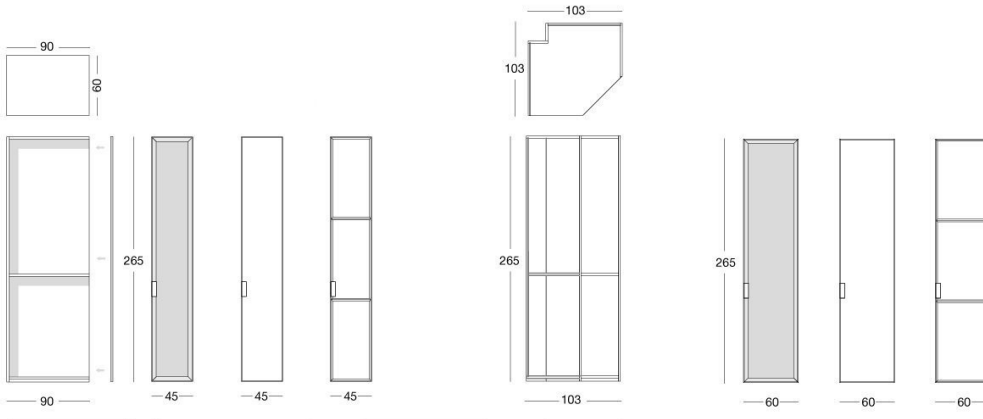
The fronts of internal drawers are covered in P.3 Cat. Suede. The sides have full height LED lighting. The doors have anodised aluminium profiles and a cast handle with insert of marble from the range. The internal back panel can be in ivory coloured glossy lacquer. The doors are supplied in bronze or smoky Stop Sol glass or covered in leather from the range with bevelled "diamond" effect. The system also includes special modules: make-up table, desk and TV cabinet.

These elements only come in the finish glossy Ebony, and shelf partitions are in bronze or smoky glass.

Note: the baseboard has a regulation pin.

TECHNICAL DRAWINGS

scala 1:50



Specchio ingranditore sagomato
Magnifying mirror
Увеличительное зеркало



Specchio
Mirror
зеркало



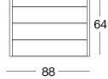
Mini cassetiera
Mini chest of drawers
мини-тумбочка



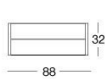
Ripiano
Shelf
модуль



Cassetiera 4 cassetti
Chest of 4 drawers
Комод с 4 ящиками



Cassetiera 2 cassetti
Chest of 2 drawers
Комод с 2 ящиками



Porta borse
Bags holder
секция для сумок



Porta pantaloni +
Svuota tasche
Trousers rods +
Glove compartment
вешалка для брюк +
отделение для мелочей



Porta camicie
Shirts holder
полка для рубашки



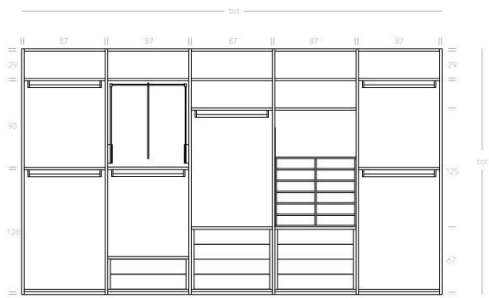
Tubo appendiabiti
Clothes rods
штanga для вешалок



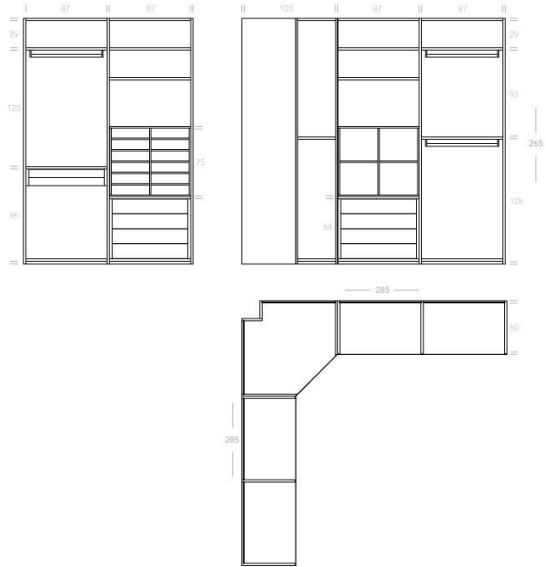
Ripiano angolare
Corner shelf
угловой модуль



Linear composition



Corner composition



Linear composition

